



Holland America Line®  
SAVOR THE JOURNEY

# CELEBRATING 75 YEARS IN ALASKA

2022 - 2023 CRUISES  
& CRUISETOURS

ALASKA  
**75**  
YEARS

# WE ARE **ALASKA**

With 75 years of history and expertise in the Great Land, We Are Alaska. And we can't wait to share it with you.



## WHY CHOOSE HOLLAND AMERICA LINE?

### EXPLORE WITH EXPERTS

With unmatched history, expertise and insider knowledge, we know how to give you a view of the Great Land you won't find with anyone else.

### PERFECTLY SIZED SHIPS

Our ships were made to cruise Alaska's spectacular coastline. Enjoy more space, fewer crowds and unobstructed views on deck to take it all in.

### SEE MORE GLACIERS

We have more sailings to Glacier Bay National Park & Preserve than any other cruise line in Alaska and offer more glacier-viewing opportunities on every cruise.

### SEE DENALI & BEYOND

Stay up to three nights at Denali National Park & Preserve and extend your adventure into the Yukon Territory – a Holland America Line exclusive.



TABLE OF CONTENTS

**4**  
ALASKA UP CLOSE™ PROGRAMMING

**8**  
DINING & ENTERTAINMENT

**18**  
ALASKA CRUISES

**24**  
ALASKA CRUISE TOURS

**40**  
FEATURES & DINING PLANS

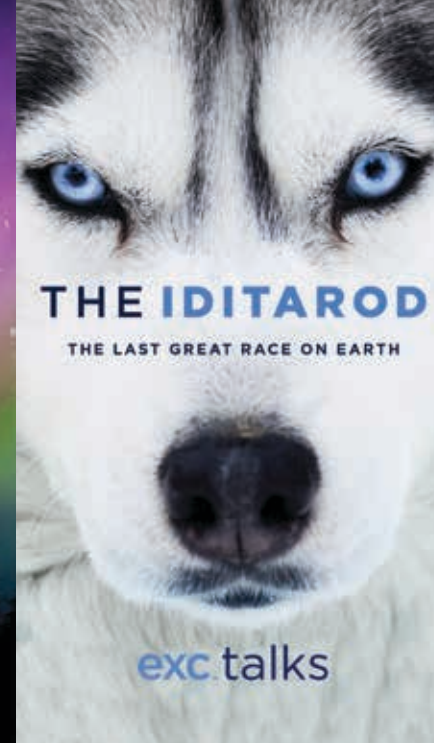
### TOP-RATED IN ALASKA

We are rated as the Best in Alaska by travel experts and experienced cruisers.



# INTRODUCING ALASKA UP CLOSE™

A new collection of exclusive onboard programming and award-winning shore excursions will show you the *real* Alaska.



**Any cruise line can take you to Alaska, but Holland America Line gets you up close with exclusive onboard programs and shore excursions that deepen your connection to this incredible land.**

You won't just spot whales from your ship; you'll learn their songs and hunting techniques. You won't simply dine on salmon; you'll watch chefs prepare it on board and learn their secrets. You'll not only get privileged access to Glacier Bay National Park, you'll also learn about its history and ecosystem from native tribe members and National Park Service Rangers who join you on deck.

## ALASKA UP CLOSE INCLUDES

- Informative and engaging **EXPLORATIONS CENTRAL® (EXC) TALKS**
- **ALASKA IN CONCERT** by BBC Earth Experiences
- Award-winning **SHORE EXCURSIONS**
- **PORT TO TABLE** onboard cooking demonstrations and **FOOD & WINE®** tours on shore
- **REGIONALLY INSPIRED DINING**
- **EXPERT PARTNERSHIPS** with National Park Service Rangers, native tribe members and onboard naturalists

# ALASKA UP CLOSE™

Exclusive programs and shore excursions connect you to the Great Land in authentic, meaningful ways.

## BBC EARTH\* IN CONCERT

Immerse yourself in the natural world with *Alaska in Concert* by BBC Earth. Featuring footage from the BBC TV series *Wild Alaska*, the visuals show Alaska at its most beautiful while a live orchestra provides a soul-stirring soundtrack.

## EXC® TALKS

Hear the stories of real Alaskans, from Iditarod mushers to native anthropologists at engaging Explorations Central® (EXC) Talks presented by your Cruise & Travel Director on the World Stage. EXC Talks include:

- We Are Alaska
- Breaking the Ice Ceiling
- Alaska's Iconic Whales
- Ancestral Memories
- Iditarod: The Last Great Race

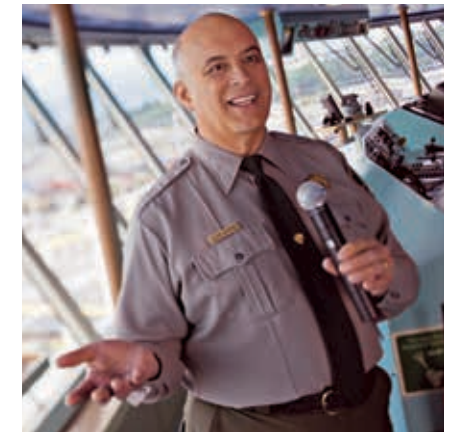
## SPECIAL CULINARY EVENTS

The flavors of Alaska take center stage throughout your journey. Explore local culinary traditions with **Port to Table** cooking demonstrations and tastings on board, and embark on exciting **FOOD & WINE®** shore excursions, from dining on fresh-caught fish to savoring Anchorage's thriving craft beer scene.

## REGIONALLY INSPIRED DINING

Throughout your cruise you can enjoy a variety of exclusive offerings from Alaska and the Pacific Northwest. Bite into a perfectly cooked piece of Alaskan salmon, snack on Beecher's handmade cheese and enjoy the refreshing taste of one of Alaskan Brewing Company's award-winning beers.

\*The BBC and BBC Earth in Concert are trademarks of the British Broadcasting Corporation and are used under license. BBC logo © BBC 1996.



## EXPERT PARTNERSHIPS

In Glacier Bay National Park & Preserve, we bring National Park Service Rangers on board to point out areas of interest and answer your questions. You'll also be joined by members of the local Huna Tlingit tribe who will share ancient stories about the history of the bay, their ancestral homeland. On every cruise, naturalists lead onboard workshops and wildlife spotting on deck.



## AWARD-WINNING SHORE EXCURSIONS

Whether you long to walk across a glacier, get closer to majestic whales or learn the secret meaning behind totem carvings, our award-winning shore excursions help you connect deeply with the people, culture and history of Alaska.



# UNRIVALED ONBOARD **DINING**

On ship and on shore, enjoy exceptional culinary experiences from Alaska and across the world.

**THE WORLD'S BEST ARE BEHIND EVERY MEAL**

Our world-renowned Culinary Council® and distinguished experts in wine and spirits bring unsurpassed expertise, creativity and passion to every dining venue, lounge and bar. From your first bite to your last sip, their influence will leave you wanting more.

**PERFECTION IS SERVED AT EVERY DINING VENUE**

From the upscale to the relaxed, our onboard dining experiences suit every mood and occasion. Wherever you choose to fuel your sense of adventure, you'll find that every meal is a triumph of freshness, creativity and diversity.

**AWARD-WINNING SERVICE AT EVERY TURN**

Gracious, attentive and always close at hand, exceptional service has always been a hallmark of cruising with Holland America Line. From your first moment on board, we focus on every detail, every day, to provide the best service at sea.





# THE BEST **LIVE MUSIC**

Welcome to Music Walk®, a Holland America Line exclusive, where every night brings unforgettable performances from world-class artists.\*



### LINCOLN CENTER STAGE

Lincoln Center Stage showcases outstanding programs of chamber music, from classical to contemporary.



### B.B. KING'S BLUES CLUB

Direct from Beale Street, B.B. King's All-Star Band brings the best of Memphis R&B to sea.



### BILLBOARD ONBOARD

Our pianists rock the house with the hits you know and love. It's off the charts. Literally.



### ROLLING STONE ROCK ROOM\*\*

Step into the pages of *Rolling Stone* magazine as a live band chronicles rock history.

\*Music Walk is not available on *Volendam* and *Zaandam*.  
\*\*Available on *Koningsdam*, *Nieuw Statendam* and *Rotterdam*.





# ACTIVITIES & AMENITIES

With a wealth of options, you can craft each day as you please.

## THE GREENHOUSE® SPA & SALON

The Greenhouse Spa & Salon nurtures every aspect of well-being with a signature brand of spa rituals and healing treatments for men and women.

## FAMILY-FOCUSED EXPERIENCES

We offer supervised, age-appropriate games and activities for kids and special events for teens as well as cooking classes, game nights and more for the whole family.

## FUJIFILM WONDER PHOTO SHOP\*

At Fujifilm Wonder Photo Shop, you can create unique photo memories and gifts from your travels.

## FITNESS CENTER

The professionally staffed Fitness Center offers classes in indoor cycling, Pilates and more, as well as the option to work out at your own pace using the latest cardio and weight machines.

## THE SHOPS OF HOLLAND AMERICA LINE

A day at sea is a perfect opportunity to discover the treasures in our shops on board, where you can pick the perfect commemorative gift, treat yourself to a new piece of jewelry and much more.

\*Fujifilm Wonder Photo Shop is not available on *Nieuw Amsterdam*, *Oosterdam* and *Zaandam*.

**BEST PRICE GUARANTEE** | shore excursions

## EXPLORE ON SHORE

From the breathtaking coastline to the vast and unspoiled interior, a Holland America Line shore excursion connects you deeply to Alaska's culture, history and legendary natural beauty.

We have shore excursions to suit every interest and activity level — all backed by our Best Price Guarantee. Guests who pre-book shore excursions are guaranteed the lowest rates on comparable shore excursions, or Holland America Line will provide an onboard credit of 110 percent of the price difference.





# TWO WAYS TO EXPLORE THE GREAT LAND

BY LAND. BY SEA. BY EXPERTS. EXPERIENCE MAJESTIC GLACIERS, AWE-INSPIRING WILDLIFE AND THE BEAUTY OF ALASKA'S INTERIOR WITH THE CRUISE LINE RATED BEST IN ALASKA.



## ALASKA CRUISES

An Alaska cruise with Holland America Line is the best way to experience breathtaking wildlife, charming towns and spectacular scenery. At the heart of every cruise are Alaska's iconic glaciers – we offer more visits to Glacier Bay National Park & Preserve than any other cruise line and include more glacier-viewing opportunities on every cruise.



## ALASKA CRUISETOURS

A cruisetour combines an unforgettable Alaska cruise with the premier Denali experience for a comprehensive and immersive journey. Travel in the luxurious glass-domed railcars of our McKinley Explorer® to Denali National Park & Preserve – the crown jewel of Alaska's interior and the home of North America's tallest mountain. For even more adventure, extend your journey into the Klondike on a Yukon & Denali Cruisetour, a Holland America Line exclusive.

Have it all.

- > SHORE EXCURSIONS
- > DRINK PACKAGE
- > SPECIALTY DINING
- > WI-FI

## MORE VALUE AND CONVENIENCE: NOW YOU CAN HAVE IT ALL.

Have It All on your Alaska cruise or cruisetour with a Premium Package that includes our four top amenities in your fare: Shore Excursions, Drink Package, Specialty Dining and Wi-Fi – a value of \$99 per person, per day!\*

\*See page 43 for complete Terms & Conditions.



# MORE VISITS TO GLACIER BAY

GLACIER BAY NATIONAL PARK & PRESERVE IS AT THE TOP OF EVERY VISITOR'S MUST-SEE LIST, WHICH IS WHY WE OFFER MORE VISITS HERE THAN ANY OTHER CRUISE LINE.



Authorized  
Concessioner  
Glacier Bay National Park



## NATURE AT ITS MOST MARVELOUS

Covering 3.3 million acres of mountains, glaciers, rain forests and fjords, Glacier Bay National Park & Preserve is home to some of the most dramatic scenery in the world. With a full day of cruising here, you have ample time to take it all in.

## ALL ABOUT GLACIERS

Glacier Bay is home to several tidewater glaciers, enormous rivers of ice that are constantly continuing their slow march towards the sea. Unmistakable among them is Margerie Glacier. Nearly a mile wide and about 300 feet in height, this massive wall of ice dwarfs everything around it, including your ship.

## EXPLORE WITH EXPERTS

As a proud Authorized Concessioner for Glacier Bay National Park, we partner with National Park Service Rangers and local Huna Tlingit guides, who provide expert insight into this diverse ecosystem and millennia-old culture.

## TOP 3 GLACIER BAY EXPERIENCES

### 1. MARGERIE GLACIER

Linger by this glacier, one of the most active in Glacier Bay, and learn its fascinating history.

### 2. JOHNS HOPKINS GLACIER

Snap photos of this arctic-blue beauty that glimmers like a jewel on clear days.

### 3. CALVING ICE

Watch and listen as ice plunges from glaciers into the bay, a sound known as “white thunder” by the native Huna Tlingit people.



# ALASKA CRUISES

SEE THE BEST OF ALASKA'S GLACIERS AND COASTAL TOWNS ON BOARD PERFECTLY SIZED SHIPS MADE TO EXPLORE THE GREAT LAND.



Tracy Arm, Alaska



Skagway, Alaska



Alaska



## THE BEST WAY TO SEE ALASKA

### WHY CHOOSE A HOLLAND AMERICA LINE ALASKA CRUISE?

- We offer **MORE SAILINGS TO GLACIER BAY NATIONAL PARK & PRESERVE** than any other cruise line
- Our Glacier Discovery itineraries visit **HUBBARD GLACIER** or **COLLEGE FJORD** in addition to **GLACIER BAY NATIONAL PARK & PRESERVE**
- Choose from **SEVEN REFRESHINGLY UNCROWDED SHIPS** that give you a front-row seat to Alaska's splendor
- **EXCLUSIVE ALASKA UP CLOSE™** programs, events and shore excursions connect you to the real Alaska
- **AWARD-WINNING 7- & 14-DAY ITINERARIES** feature unique ports of call and offer convenient weekend departures
- See the best of **ALASKA'S CHARMING COASTAL PORTS**, including Ketchikan, Juneau, Sitka and Skagway
- **PRIME DOCKING LOCATIONS** put you just steps away from all that Alaska has to offer and let you get a head start on your exploration every day



# ALASKA CRUISES



- 7-Day Alaskan Inside Passage
- 7-Day Glacier Discovery (Northbound voyages include College Fjord and Southbound voyages include Hubbard Glacier)
- 7-Day Alaskan Explorer
- 14-Day Great Alaskan Explorer



Glacier Bay National Park & Preserve

## 7 DAYS ALASKAN INSIDE PASSAGE

0	1	2	3	4	5	6	7
Vancouver	Inside Passage	Juneau	Skagway	Glacier Bay	Ketchikan	Inside Passage	Disembark Vancouver

### VIA GLACIER BAY

Select sailings cruise Tracy Arm or Endicott Arm in lieu of Glacier Bay and call on Sitka in lieu of Skagway.

## 7 DAYS GLACIER DISCOVERY

0	1	2	3	4	5	6	7
Vancouver	Inside Passage	Ketchikan	Juneau	Skagway	Glacier Bay	College Fjord	Disembark Whittier

### NORTHBOUND VIA GLACIER BAY & COLLEGE FJORD

0	1	2	3	4	5	6	7
Whittier	Hubbard Glacier	Glacier Bay	Skagway	Juneau	Ketchikan	Inside Passage	Disembark Vancouver

### SOUTHBOUND VIA GLACIER BAY & HUBBARD GLACIER

## 7 DAYS ALASKAN EXPLORER

0	1	2	3	4	5	6	7
Seattle	At Sea	Juneau	Glacier Bay & Icy Strait Point	Sitka	Ketchikan	Victoria	Disembark Seattle

### VIA GLACIER BAY

Select sailings cruise Tracy Arm in lieu of Glacier Bay and Icy Strait Point and call on Skagway in lieu of Sitka.

0	1	2	3	4	5	6	7
Seattle	At Sea	Juneau	Hubbard Glacier	Sitka	Ketchikan	Victoria	Disembark Seattle

### VIA HUBBARD GLACIER

## 14 DAYS GREAT ALASKAN EXPLORER

0	1	2	3	4	5	6	7
Vancouver	At Sea	Ketchikan	At Sea	Juneau	Tracy Arm or Endicott Arm	At Sea	Icy Strait Point
8	9	10	11	12	13	14	
Glacier Bay	Skagway	Sitka	Misty Fjords	Prince Rupert	Inside Passage	Disembark Vancouver	

Sep 18, 2022, sailing.

## 14 DAYS GREAT ALASKAN EXPLORER

0	1	2	3	4	5	6	7
Vancouver	Inside Passage	At Sea	Kodiak	Anchorage	At Sea	Valdez	At Sea
8	9	10	11	12	13	14	
Glacier Bay	Skagway	Sitka	Ketchikan	Prince Rupert	At Sea	Disembark Vancouver	

Sep 11, 2022; May 7, 2023; and Sep 17, 2023, sailings.



Alaska



Icy Strait Point, Alaska

# ALASKA CRUISES



Ketchikan, Alaska



## 14-DAY GREAT ALASKAN EXPLORER

Roundtrip Vancouver

*Noordam*  
Sep 18, 2022

🕒 Evening stay.



## 14-DAY GREAT ALASKAN EXPLORER

Roundtrip Vancouver

*Nieuw Amsterdam*  
Sep 11, 2022  
May 7, 2023

*Noordam*  
Sep 17, 2023



## 7-DAY NORTHBOUND GLACIER DISCOVERY

Vancouver to Whittier (Anchorage)

*Nieuw Amsterdam*  
May 8 – Aug 28, 2022  
May 21 – Sep 10, 2023

*Noordam*  
May 15 – Sep 4, 2022  
May 14 – Sep 3, 2023

🕒 Evening stay.



## 7-DAY SOUTHBOUND GLACIER DISCOVERY

Whittier (Anchorage) to Vancouver

*Nieuw Amsterdam*  
May 15 – Sep 4, 2022  
May 28 – Sep 17, 2023

*Noordam*  
May 22 – Sep 11, 2022  
May 21 – Sep 10, 2023



## 7-DAY ALASKAN INSIDE PASSAGE

Roundtrip Vancouver

*Zuiderdam*  
Apr 27 – Sep 21, 2022

*Koningsdam*  
Apr 30 – Oct 1, 2022  
Apr 29 – Sep 30, 2023

*Nieuw Amsterdam*  
May 1; Sep 25, 2022  
Apr 30; Sep 24, 2023

*Noordam*  
May 7, 2023

*Volendam*  
May 10 – Sep 20, 2023

🕒 Evening stay.

The *Noordam* 5/7/23 sailing cruises scenic Tracy Arm or Endicott Arm in lieu of Glacier Bay and calls on Sitka in lieu of Skagway. The *Koningsdam* 9/24 and 10/1/22 sailings and the *Nieuw Amsterdam* 5/1 and 9/25/22 sailings and the 4/30 and 9/24/23 sailings do not include a service call for shore excursions at Tracy Arm.



## 7-DAY ALASKAN EXPLORER VIA GLACIER BAY

Roundtrip Seattle

*Eurodam*  
Apr 30 – Oct 1, 2022  
Apr 29 – Sep 30, 2023

🕒 Evening stay.

The 10/1/22 sailing cruises scenic Tracy Arm or Endicott Arm in lieu of Glacier Bay and calls on Skagway in lieu of Icy Strait Point and Sitka. The 5/28/22 sailing calls on Hubbard Glacier in lieu of Glacier Bay and Icy Strait Point.



## 7-DAY ALASKAN EXPLORER VIA HUBBARD GLACIER

Roundtrip Seattle

*Westerdam*  
Jun 12 – Sep 18, 2022  
May 7 – Sep 24, 2023

🕒 Evening stay.



Alaska

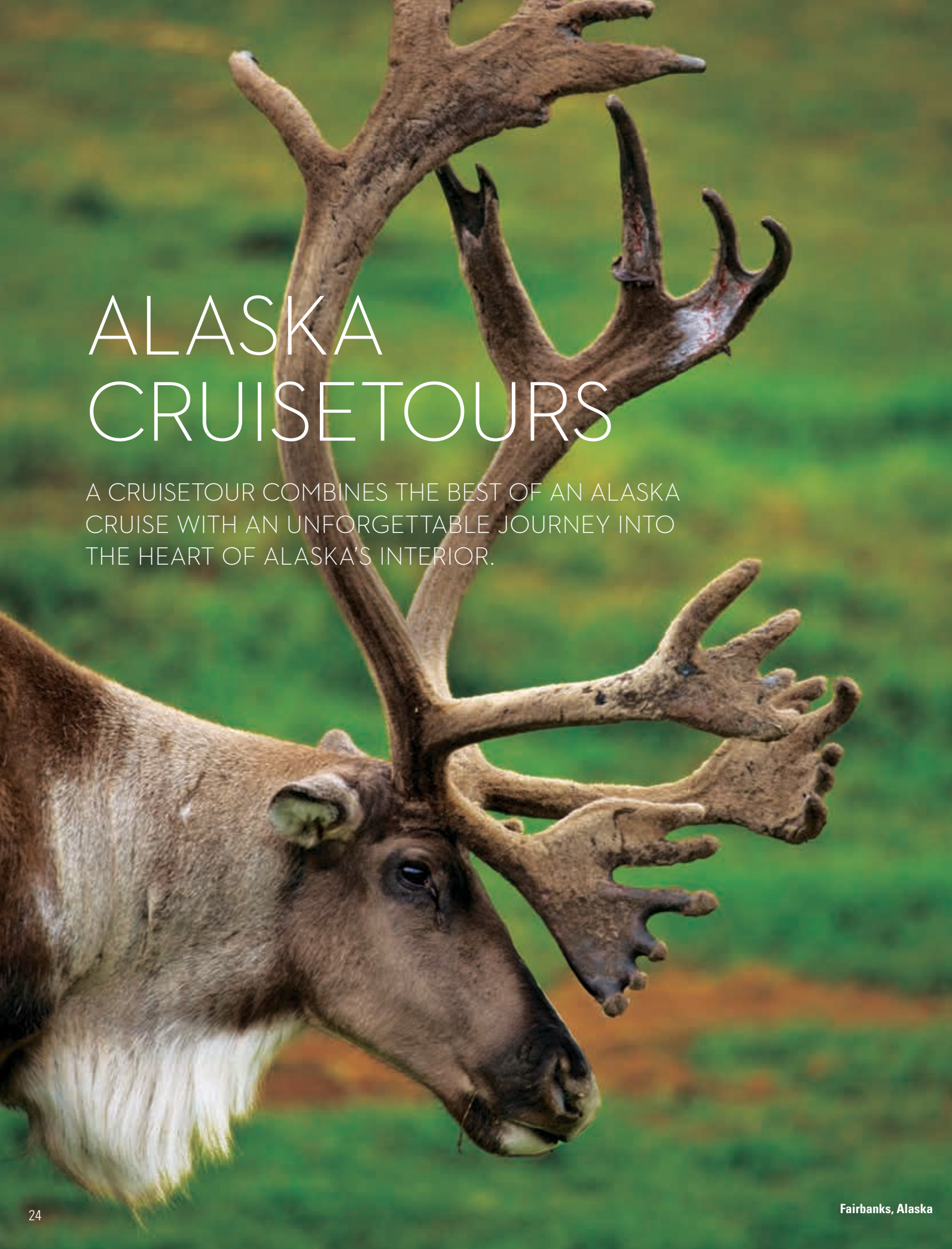


# Have it all.

**BOOK TODAY AND GET FOUR HIGH-VALUE AMENITIES INCLUDED IN YOUR FARE: SHORE EXCURSIONS, DRINKS, SPECIALTY DINING AND WI-FI\*. Visit [hollandamerica.com](http://hollandamerica.com), call 1-877-SAIL HAL (1-877-724-5425) or contact your Travel Advisor today.** \*See page 43 for complete Terms & Conditions.

# ALASKA CRUISETOURS

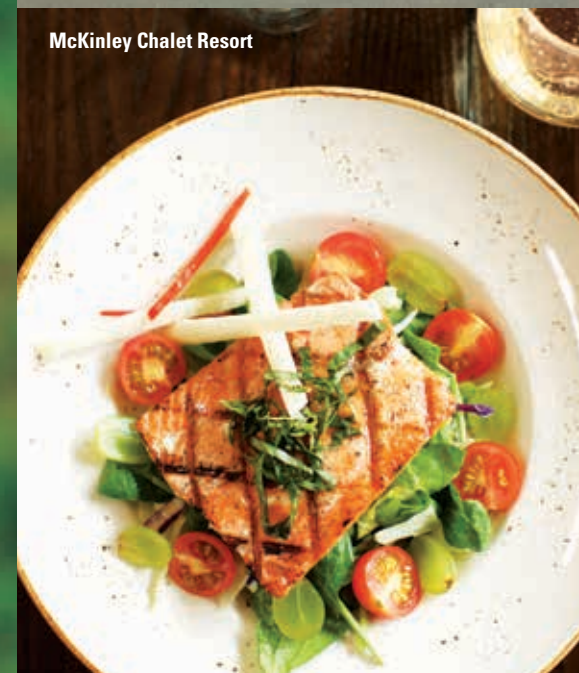
A CRUISETOUR COMBINES THE BEST OF AN ALASKA CRUISE WITH AN UNFORGETTABLE JOURNEY INTO THE HEART OF ALASKA'S INTERIOR.



Fairbanks, Alaska



Fairbanks, Alaska



McKinley Chalet Resort



McKinley Explorer



## EXTEND YOUR EXPLORATION INLAND

### WHY CHOOSE AN ALASKA CRUISETOUR?

- **A VISIT TO DENALI.** Denali National Park & Preserve is the number one reason our guests venture inland, and a visit here is included on all of our cruisetours.
- **STAY AT THE PREMIER DENALI PROPERTY.** Every cruisetour features a stay at our own McKinley Chalet Resort, a comfortable and welcoming base camp ideally positioned near the gates of Denali National Park & Preserve.
- **MORE WILDLIFE.** Embark on the popular Tundra Wilderness Tour for a chance to see grizzly bears, moose, caribou, Dall sheep and gray wolves in the wild.
- **DIRECT TO DENALI BY RAIL.** Every cruisetour includes a scenic trip between Anchorage and Denali aboard the luxury domed railcars of our McKinley Explorer®, including select rail adventures that begin directly from the ship.
- **VENTURE INTO THE YUKON.** We are the only cruise line that can take you into the Yukon Territory, where you can visit Dawson City and uncover legendary tales of the Klondike Gold Rush.
- **SEAMLESS TRAVEL THROUGHOUT YOUR JOURNEY.** On Alaska cruisetours we use our own hotels, resorts, inns, railcars and motorcoaches to assure consistent quality and service from ship to shore.
- **IT'S EASY.** All your luggage is transported directly to and from your hotel room. We check you in and distribute your keys in advance so you can have more time to enjoy the Great Land.



Denali National Park & Preserve



Alaska



Anchorage, Alaska



Alaska

# THE PREMIER DENALI EXPERIENCE

COMBINE THE BEST OF AN ALASKA CRUISE WITH AN IMMERSIVE EXPLORATION OF ALASKA'S INTERIOR.

- **GET MORE TIME TO EXPLORE** with the option to stay up to three nights at Denali National Park & Preserve
- All 2- and 3-night Denali stays include our **TUNDRA WILDERNESS TOUR**, where you may see grizzly bears, caribou, Dall sheep, wolves and moose in the wild
- **STAY AT OUR OWN MCKINLEY CHALET RESORT**, the best property near the gates of Denali National Park & Preserve
- Explore **DENALI SQUARE™**, featuring live music, exquisite cuisine and soaring views
- Spread out in a spacious **DENALI SUITE** with a private balcony, larger living area and enhanced amenities
- Enjoy breathtaking views as you travel aboard our own **MCKINLEY EXPLORER®** luxury domed railcars

# AN EXCLUSIVE RETREAT ON DENALI'S DOORSTEP

OUR OWN MCKINLEY CHALET RESORT PUTS YOU IN THE PERFECT POSITION TO DISCOVER THE WONDERS OF DENALI NATIONAL PARK & PRESERVE.



Denali Square™



## YOUR BASE CAMP FOR ADVENTURE

### A RESORT LIKE NO OTHER

Perched on the banks of the Nenana River just outside of Denali National Park & Preserve is our McKinley Chalet Resort. A stay here is included on all our cruisetours, giving you ample time to take in Denali's beauty and experience adventures such as fly fishing, heli-hiking and our popular Tundra Wilderness Tour.

### DISCOVER DENALI SQUARE™

At the heart of the McKinley Chalet Resort you'll find Denali Square – the perfect place to celebrate Alaska. Enjoy Alaska-themed fare and soaring views at Karstens Public House, chat with our artists in residence, take in *The Music of Denali* at the Gold Nugget Saloon, or gather around a cozy campfire to make s'mores.

### THE PERFECT END TO EACH DAY

Upgrade your stay to a welcoming Denali Suite, where you can spread out with more space, take in the breathtaking views from your private balcony and slip into crisp sheets for a well-earned rest.



Dawson City



Alaska



Yukon River

## EXCLUSIVE ACCESS TO THE YUKON

EMBARK ON THE ADVENTURE OF A LIFETIME WITH THE ONLY CRUISE LINE THAT COMBINES ALASKA WITH THE RICH HISTORY AND MAJESTY OF THE YUKON TERRITORY.

- Follow in the footsteps of Klondike Gold Rush prospectors as you make your way to **DAWSON CITY**
- Climb out of Skagway on board the famed **WHITE PASS & YUKON ROUTE RAILROAD**
- Strike out for **DISCOVERY CLAIM** outside of Dawson City, where the first piece of Yukon gold was spotted in the waters of Rabbit Creek
- Experience a bygone era as you traverse the Yukon River on board the paddlewheeler **KLONDIKE SPIRIT**
- With you at every step is a **PROFESSIONAL JOURNEY HOST** who will assist you with any questions and provide ideas and information about additional sightseeing opportunities
- Every Yukon & Denali Cruisetour includes a stay at Denali and a spectacular Alaska cruise, giving you the **BEST OF LAND AND SEA** in one extraordinary experience



# ALASKA CRUISETOURS



## EVERY D0-D9 AND S1-S2 CRUISETOUR INCLUDES



An elegant 7-Day Alaska cruise with sophisticated dining, extensive activities, enrichment programs and nightly entertainment



Glacier-viewing opportunities at Glacier Bay and/or Hubbard Glacier or College Fjord



A journey into Denali National Park & Preserve on a comprehensive Tundra Wilderness Tour\*



Premier overnight accommodations at our renovated McKinley Chalet Resort (Denali) and updated properties in Fairbanks and Anchorage



A ride on board the McKinley Explorer® luxury domed railcars for a breathtaking journey between Anchorage and Denali

\*Not available on Denali Cruisetours D7-D9.

## TRIPLE DENALI CRUISETOURS

D1	DAY 0	1	2	3	4	5	6	7	8	9	10	11	12
land first	Fairbanks	Triple Denali			Anchorage	Whittier	Hubbard Glacier	Glacier Bay	Skagway	Juneau	Ketchikan	Inside Passage	Disembark Vancouver
cruise first	Vancouver	Inside Passage	Ketchikan	Juneau	Skagway	Glacier Bay	College Fjord	Anchorage	Triple Denali			Fairbanks	Cruisetour Ends
D2	DAY 0	1	2	3	4	5	6	7	8	9	10	11	
land first	Anchorage	Triple Denali			Whittier	Hubbard Glacier	Glacier Bay	Skagway	Juneau	Ketchikan	Inside Passage	Disembark Vancouver	
cruise first	Vancouver	Inside Passage	Ketchikan	Juneau	Skagway	Glacier Bay	College Fjord	Triple Denali			Anchorage	Cruisetour Ends	

DIRECT TO DENALI

## DOUBLE DENALI CRUISETOURS

D3	DAY 0	1	2	3	4	5	6	7	8	9	10	11	12	13	14
land first	Fairbanks	Double Denali		Anchorage	Seward	Whittier	Hubbard Glacier	Glacier Bay	Skagway	Juneau	Ketchikan	Inside Passage	Disembark Vancouver		
cruise first	Vancouver	Inside Passage	Ketchikan	Juneau	Skagway	Glacier Bay	College Fjord	Seward	Anchorage	Double Denali		Fairbanks	Cruisetour Ends		
D4	DAY 0	1	2	3	4	5	6	7	8	9	10	11	12	13	14
land first	Fairbanks	Double Denali		Talkeetna	Alyeska	Whittier	Hubbard Glacier	Glacier Bay	Skagway	Juneau	Ketchikan	Inside Passage	Disembark Vancouver		
cruise first	Vancouver	Inside Passage	Ketchikan	Juneau	Skagway	Glacier Bay	College Fjord	Alyeska	Talkeetna	Double Denali		Fairbanks	Cruisetour Ends		
D5	DAY 0	1	2	3	4	5	6	7	8	9	10	11			
land first	Fairbanks	Double Denali		Anchorage	Whittier	Hubbard Glacier	Glacier Bay	Skagway	Juneau	Ketchikan	Inside Passage	Disembark Vancouver			
cruise first	Vancouver	Inside Passage	Ketchikan	Juneau	Skagway	Glacier Bay	College Fjord	Anchorage	Double Denali		Fairbanks	Cruisetour Ends			
D6	DAY 0	1	2	3	4	5	6	7	8	9	10				
land first	Anchorage	Double Denali		Whittier	Hubbard Glacier	Glacier Bay	Skagway	Juneau	Ketchikan	Inside Passage	Disembark Vancouver				
cruise first	Vancouver	Inside Passage	Ketchikan	Juneau	Skagway	Glacier Bay	College Fjord	Double Denali		Anchorage	Cruisetour Ends				
												DIRECT TO DENALI			
D0	DAY 0	1	2	3	4	5	6	7	8	9	10				
land first	Fairbanks	Double Denali		Whittier	Hubbard Glacier	Glacier Bay	Skagway	Juneau	Ketchikan	Inside Passage	Disembark Vancouver				
cruise first	Vancouver	Inside Passage	Ketchikan	Juneau	Skagway	Glacier Bay	College Fjord	Double Denali		Fairbanks	Cruisetour Ends				
												DIRECT TO DENALI			

## DENALI CRUISETOURS

D7	DAY 0	1	2	3	4	5	6	7	8	9	10	
land first	Fairbanks	Denali	Anchorage	Whittier	Hubbard Glacier	Glacier Bay	Skagway	Juneau	Ketchikan	Inside Passage	Disembark Vancouver	
cruise first	Vancouver	Inside Passage	Ketchikan	Juneau	Skagway	Glacier Bay	College Fjord	Anchorage	Denali	Fairbanks	Cruisetour Ends	
D8	DAY 0	1	2	3	4	5	6	7	8	9		
land first	Fairbanks	Denali	Whittier	Hubbard Glacier	Glacier Bay	Skagway	Juneau	Ketchikan	Inside Passage	Disembark Vancouver		
cruise first	Vancouver	Inside Passage	Ketchikan	Juneau	Skagway	Glacier Bay	College Fjord	Denali	Fairbanks	Cruisetour Ends		
											DIRECT TO DENALI	
D9	DAY 0	1	2	3	4	5	6	7	8	9	10	
land first	Anchorage	Talkeetna	Denali	Whittier	Hubbard Glacier	Glacier Bay	Skagway	Juneau	Ketchikan	Inside Passage	Disembark Vancouver	
cruise first	Vancouver	Inside Passage	Ketchikan	Juneau	Skagway	Glacier Bay	College Fjord	Denali	Talkeetna	Anchorage	Cruisetour Ends	
												DIRECT TO DENALI

## SEATTLE DOUBLE DENALI CRUISETOURS

S1	DAY 0	1	2	3	4	5	6	7	8	9	10	11	
land first	Fairbanks	Double Denali		Anchorage	Seattle	Puget Sound	Juneau	Glacier Bay/Icy Strait Point	Sitka	Ketchikan	Victoria	Disembark Seattle	
S2	DAY 0	1	2	3	4	5	6	7	8	9	10	11	12
land first	Fairbanks	Double Denali		Anchorage	Seattle	Seattle	Puget Sound	Juneau	Hubbard Glacier	Sitka	Ketchikan	Victoria	Disembark Seattle

On Land At Sea Flight Rail Motorcoach Cruise DIRECT TO DENALI

Travel to Denali right from your ship by rail or motorcoach; no overnight in Anchorage.

# ALASKA CRUISETOURS



## EVERY Y1-Y6 CRUISETOUR INCLUDES



**An elegant 3-, 4- or 7-day cruise** including dining, activities and nightly entertainment



**A professional Journey Host** on the land portion of your vacation



**Glacier-viewing opportunities** at Glacier Bay, Hubbard Glacier or Tracy Arm\*



**A convenient one-hour flight** between Fairbanks and Dawson City in the Yukon



**A comprehensive Tundra Wilderness Tour** to the heart of Denali National Park & Preserve



**A breathtaking journey between Anchorage and Denali** on board the McKinley Explorer® luxury domed railcars

\*Y3-Y6 Cruise First Cruisetours do not include glacier viewing but offer an OPTIONAL excursion to Tracy Arm and the twin Sawyer Glaciers.

## YUKON & DENALI CRUISETOURS WITH GLACIER DISCOVERY CRUISE

Y1	DAY 0	1	2	3	4	5	6	7	8	9	10	11	12	13
land first	Vancouver	Whitehorse	Dawson City	Fairbanks	Triple Denali			Anchorage	Whittier	Hubbard Glacier	Glacier Bay			
CONT'd	14	15	16	17	18									
		Skagway	Juneau	Ketchikan	Inside Passage	Disembark Vancouver								
cruise first	Vancouver	Inside Passage	Ketchikan	Juneau	Skagway	Glacier Bay	College Fjord	Anchorage		Triple Denali		Fairbanks		
CONT'd	14	15	16	17	18									
		Dawson City	Whitehorse	Vancouver	Cruisetour Ends									

Y2	DAY 0	1	2	3	4	5	6	7	8	9	10	11	12	13	14
land first	Vancouver	Dawson City	Double Denali		Anchorage	Whittier	Hubbard Glacier	Glacier Bay	Skagway	Juneau	Ketchikan	Inside Passage	Disembark Vancouver		
cruise first	Vancouver	Inside Passage	Ketchikan	Juneau	Skagway	Glacier Bay	College Fjord	Anchorage		Double Denali		Dawson City	Vancouver	Cruisetour Ends	

## YUKON & DENALI CRUISETOURS WITH INSIDE PASSAGE CRUISE

Y3	DAY 0	1	2	3	4	5	6	7	8	9	10	11	12	13	14
land first	Anchorage	Triple Denali		Fairbanks	Dawson City	Whitehorse	Skagway	Skagway	Glacier Bay	Ketchikan	Inside Passage	Disembark Vancouver			
cruise first	Vancouver	Inside Passage	Juneau	Skagway	Whitehorse	Dawson City	Fairbanks	Triple Denali		Anchorage	Cruisetour Ends				

Y4	DAY 0	1	2	3	4	5	6	7	8	9	10	11	12
land first	Anchorage	Double Denali		Fairbanks	Dawson City	Whitehorse	Skagway	Skagway	Glacier Bay	Ketchikan	Inside Passage	Disembark Vancouver	
cruise first	Vancouver	Inside Passage	Juneau	Skagway	Whitehorse	Dawson City	Fairbanks	Double Denali		Anchorage	Cruisetour Ends		

Y5	DAY 0	1	2	3	4	5	6	7	8	9	10	11
land first	Anchorage	Double Denali		Fairbanks	Dawson City	Whitehorse	Skagway	Glacier Bay	Ketchikan	Inside Passage	Disembark Vancouver	
cruise first	Vancouver	Inside Passage	Juneau	Whitehorse	Dawson City	Fairbanks	Double Denali		Anchorage	Cruisetour Ends		

Y6	DAY 0	1	2	3	4	5	6	7	8	9	10
land first	Anchorage	Double Denali		Fairbanks	Dawson City	Skagway	Glacier Bay	Ketchikan	Inside Passage	Disembark Vancouver	
cruise first	Vancouver	Inside Passage	Juneau	Dawson City	Fairbanks	Double Denali		Anchorage	Cruisetour Ends		



# ALASKA CRUISE TOURS

## D1 12-DAY TRIPLE DENALI

7-Day Glacier Discovery cruise, plus:

- Three nights in Denali
- One night each: Anchorage, Fairbanks

**INCLUDED IN YOUR CRUISE TOUR**

- McKinley Explorer®
- Tundra Wilderness Tour (S)
- Cruisetrain
- Riverboat Discovery (L)

Vancouver to Fairbanks (or reverse)

May 8 – Sep 6, 2022  
May 14 – Sep 12, 2023

## D3 14-DAY DOUBLE DENALI

7-Day Glacier Discovery cruise, plus:

- Two nights each: Seward, Denali, Fairbanks
- One night in Anchorage

**INCLUDED IN YOUR CRUISE TOUR**

- Gold Dredge 8
- Tundra Wilderness Tour (S)
- McKinley Explorer
- Riverboat Discovery (L)
- Portage Glacier

Vancouver to Fairbanks (or reverse)

May 8 – Sep 4, 2022  
May 14 – Sep 10, 2023

## D2 11-DAY TRIPLE DENALI



7-Day Glacier Discovery cruise, plus:

- Three nights in Denali
- One night in Anchorage

**INCLUDED IN YOUR CRUISE TOUR**

- McKinley Explorer
- Tundra Wilderness Tour (S)

Vancouver to Anchorage (or reverse)

May 8 – Sep 7, 2022  
May 14 – Sep 13, 2023

## D4 14-DAY DOUBLE DENALI

7-Day Glacier Discovery cruise, plus:

- Two nights each: Denali, Fairbanks, Alyeska
- One night in Talkeetna

**INCLUDED IN YOUR CRUISE TOUR**

- Gold Dredge 8
- Tundra Wilderness Tour (S)
- McKinley Explorer
- Riverboat Discovery (L)
- Portage Glacier

Vancouver to Fairbanks (or reverse)

May 8 – Sep 4, 2022  
May 14 – Sep 10, 2023

Skagway, Alaska



## D7 10-DAY DENALI

7-Day Glacier Discovery cruise, plus:

- One night each: Denali, Anchorage, Fairbanks

**INCLUDED IN YOUR CRUISE TOUR**

- McKinley Explorer®

Vancouver to Fairbanks (or reverse)

May 8 – Sep 8, 2022  
May 14 – Sep 14, 2023

## D0 10-DAY DOUBLE DENALI



7-Day Glacier Discovery cruise, plus:

- Two nights in Denali
- One night in Fairbanks

**INCLUDED IN YOUR CRUISE TOUR**

- McKinley Explorer
- Tundra Wilderness Tour (S)

Vancouver to Fairbanks (or reverse)

May 8 – Sep 8, 2022  
May 14 – Sep 14, 2023

## D8 9-DAY DENALI



7-Day Glacier Discovery cruise, plus:

- One night each: Denali, Fairbanks

**INCLUDED IN YOUR CRUISE TOUR**

- McKinley Explorer

Vancouver to Fairbanks (or reverse)

May 8 – Sep 9, 2022  
May 14 – Sep 15, 2023

## S1 11-DAY SEATTLE DOUBLE DENALI

7-Day Alaskan Explorer cruise, plus:

- Two nights in Denali
- One night each: Anchorage, Fairbanks

**INCLUDED IN YOUR CRUISE TOUR**

- McKinley Explorer
- Tundra Wilderness Tour (S)
- Riverboat Discovery (L)

Fairbanks to Seattle

May 17 – Sep 13, 2022

## D9 10-DAY DENALI & TALKEETNA



7-Day Glacier Discovery cruise, plus:

- One night each: Denali, Talkeetna, Anchorage

**INCLUDED IN YOUR CRUISE TOUR**

- McKinley Explorer

Vancouver to Anchorage (or reverse)

May 8 – Sep 8, 2022  
May 14 – Sep 14, 2023

### NEW SEATTLE CRUISE TOURS

## S2 12-DAY SEATTLE DOUBLE DENALI

7-Day Alaskan Explorer cruise, plus:

- Two nights in Denali
- One night each: Anchorage, Fairbanks, Seattle

**INCLUDED IN YOUR CRUISE TOUR**

- McKinley Explorer
- Tundra Wilderness Tour (S)
- Riverboat Discovery (L)

Fairbanks to Seattle

Jun 7 – Sep 13, 2022

Denali National Park & Preserve



## D5 11-DAY DOUBLE DENALI

7-Day Glacier Discovery cruise, plus:

- Two nights in Denali
- One night each: Anchorage, Fairbanks

**INCLUDED IN YOUR CRUISE TOUR**

- McKinley Explorer
- Tundra Wilderness Tour (S)
- Cruisetrain
- Riverboat Discovery (L)

Vancouver to Fairbanks (or reverse)

May 8 – Sep 7, 2022  
May 14 – Sep 13, 2023

## D6 10-DAY DOUBLE DENALI



7-Day Glacier Discovery cruise, plus:

- Two nights in Denali
- One night in Anchorage

**INCLUDED IN YOUR CRUISE TOUR**

- McKinley Explorer
- Tundra Wilderness Tour (S)

Vancouver to Anchorage (or reverse)

May 8 – Sep 8, 2022  
May 14 – Sep 14, 2023

Denali National Park & Preserve



Have it all.

**BOOK TODAY AND GET FOUR HIGH-VALUE AMENITIES INCLUDED IN YOUR FARE: SHORE EXCURSIONS, DRINKS, SPECIALTY DINING AND WI-FI\*. Visit [hollandamerica.com](http://hollandamerica.com), call 1-877-SAIL HAL (1-877-724-5425) or contact your Travel Advisor today.** \*See page 43 for complete Terms & Conditions.

L = Lunch included; S = Snack included, full lunch upgrade available.



Riverboat *Discovery*



White Pass & Yukon Route Railroad



Motorcoach

## WITH YOU AT EVERY STEP

ON BOARD AND ASHORE, OUR EMPLOYEES AND PARTNERS ARE ALASKA AND YUKON EXPERTS AND ENTHUSIASTS – EAGER TO SHARE THE LAND THEY LOVE WITH YOU.

### PROFESSIONAL JOURNEY HOST

All Yukon & Denali Cruisetours feature the services of a professional Journey Host during your time in the Yukon Territory. These knowledgeable and hard-working guides will assist you with any questions and provide you with ideas and information about additional sightseeing opportunities.

### AT DENALI NATIONAL PARK & PRESERVE

A professional guide leads you on an in-depth Tundra Wilderness Tour, and your visit to Denali includes an optional interpretive National Park Service Ranger presentation.

### ON TRAINS AND MOTORCOACHES

Rail guides and driver-guides point out scenic landmarks, historic mileposts and wildlife while sharing the area's colorful history and personal anecdotes.

### AT OUR RESORTS, HOTELS AND INNS

Our Guest Service Hosts are here to help. Stop by the Service Desk for tips on the local scene or friendly assistance with any questions.

### ON SHORE EXCURSIONS

Alaskan locals offer unparalleled insights. Meet crab boat captains, join a marine scientist on a whale research vessel or follow your guide as you snowshoe across stunning alpine terrain.

### Y1 18-DAY YUKON & TRIPLE DENALI

7-Day Glacier Discovery cruise, plus:

- Three nights in Denali
- Two nights each: Dawson City, Fairbanks, Anchorage
- One night each: Whitehorse, Vancouver

**INCLUDED IN YOUR CRUISETOUR**

- |                 |                                  |
|-----------------|----------------------------------|
| • Journey Host  | • Tundra Wilderness Tour (S)     |
| • Gold Dredge 8 | • Riverboat <i>Discovery</i> (L) |
| • Cruisetrain   | • McKinley Explorer®             |
|                 | • Taste of the Yukon (L)         |

Roundtrip Vancouver

May 15 – Aug 31, 2022  
May 14 – Aug 30, 2023

### Y4 11- OR 12-DAY YUKON & DOUBLE DENALI

3- or 4-Day Inside Passage cruise, plus:

- Two nights each: Dawson City, Denali
- One night each: Skagway, Fairbanks, Whitehorse, Anchorage

**INCLUDED IN YOUR CRUISETOUR**

- |                          |                              |
|--------------------------|------------------------------|
| • Journey Host           | • Tundra Wilderness Tour (S) |
| • <i>Klondike Spirit</i> | • McKinley Explorer          |
| • White Pass Rail        | • Gold Dredge 8              |

Vancouver to Anchorage (or reverse)

May 20 – Aug 31, 2022  
May 19 – Sep 2, 2023

### Y2 14-DAY YUKON & DOUBLE DENALI

7-Day Glacier Discovery cruise, plus:

- Two nights each: Dawson City, Denali, Anchorage
- One night in Vancouver

**INCLUDED IN YOUR CRUISETOUR**

- |                                  |                              |
|----------------------------------|------------------------------|
| • Journey Host                   | • Tundra Wilderness Tour (S) |
| • Riverboat <i>Discovery</i> (L) | • McKinley Explorer          |
|                                  | • Cruisetrain                |

Roundtrip Vancouver

May 15 – Sep 4, 2022  
May 14 – Sep 3, 2023

Land First Cruisetours include the Gold Dredge 8 experience in lieu of the riverboat *Discovery*.

### Y5 10- OR 11-DAY YUKON & DOUBLE DENALI

3- or 4-Day Inside Passage cruise, plus:

- Two nights each: Dawson City, Denali
- One night each: Anchorage, Fairbanks, Whitehorse

**INCLUDED IN YOUR CRUISETOUR**

- |                   |                              |
|-------------------|------------------------------|
| • Journey Host    | • Tundra Wilderness Tour (S) |
| • White Pass Rail | • McKinley Explorer          |
|                   | • Gold Dredge 8              |

Vancouver to Anchorage (or reverse)

May 21 – Aug 31, 2022  
May 20 – Sep 2, 2023

### Y3 13- OR 14-DAY YUKON & TRIPLE DENALI

3- or 4-Day Inside Passage cruise, plus:

- Three nights in Denali
- Two nights each: Dawson City, Skagway
- One night each: Anchorage, Fairbanks, Whitehorse

**INCLUDED IN YOUR CRUISETOUR**

- |                          |                              |
|--------------------------|------------------------------|
| • Journey Host           | • Tundra Wilderness Tour (S) |
| • <i>Klondike Spirit</i> | • McKinley Explorer          |
| • White Pass Rail        | • Gold Dredge 8              |

Vancouver to Anchorage (or reverse)

May 18 – Aug 31, 2022  
May 17 – Sep 2, 2023

### Y6 9- OR 10-DAY YUKON & DOUBLE DENALI

3- or 4-Day Inside Passage cruise, plus:

- Two nights each: Dawson City, Denali
- One night each: Fairbanks, Anchorage

**INCLUDED IN YOUR CRUISETOUR**

- |                     |                              |
|---------------------|------------------------------|
| • Journey Host      | • Tundra Wilderness Tour (S) |
| • McKinley Explorer | • White Pass Rail            |

Vancouver to Anchorage (or reverse)

May 25 – Aug 31, 2022  
May 24 – Sep 2, 2023

L = Lunch included; S = Snack included, full lunch upgrade available.



Have it all.

**BOOK TODAY AND GET FOUR HIGH-VALUE AMENITIES INCLUDED IN YOUR FARE: SHORE EXCURSIONS, DRINKS, SPECIALTY DINING AND WI-FI\*.** Visit [hollandamerica.com](http://hollandamerica.com), call 1-877-SAIL HAL (1-877-724-5425) or contact your Travel Advisor today. \*See page 43 for complete Terms & Conditions.



# 2022-2023 ALASKA CRUISETOURS FEATURES & DINING PLANS

## INCLUDED DINING

All cruise dining is included.▲ An additional snack is provided on the Tundra Wilderness Tour. Lunch is included before or after the riverboat *Discovery* cruise, as well as in Minto while traveling via motorcoach between Dawson City and Whitehorse.

▲ A nominal fee is charged for specialty restaurants.

## SEATTLE CRUISETOUR CONNECTOR

Make your cruisetour roundtrip from Seattle. Includes Seattle overnight, air between Seattle and Alaska, and motorcoach between Seattle and Vancouver. For more details, see [hollandamerica.com](http://hollandamerica.com).

## OTHER TRANSPORTATION

All transportation by luxury motorcoach, rail and cruise ship, as well as flights■ between Fairbanks and Dawson City, Whitehorse and Vancouver, Dawson City and Whitehorse, and Anchorage and Seattle, is included.

■ Cruisetour flights require passport information and middle names, if applicable, to be submitted at the time of booking.

CRUISETOUR FEATURES	D1	D2	D3	D4	D5	D6
7-DAY GLACIER DISCOVERY CRUISE With stops at Skagway, Juneau and Ketchikan	✓	✓	✓	✓	✓	✓
3- OR 4-DAY INSIDE PASSAGE CRUISE Begin with a 3-day cruise or end with a 4-day cruise						
7-DAY ALASKAN EXPLORER CRUISE With stops at Juneau, Sitka, Ketchikan & Victoria						
GLACIER BAY NATIONAL PARK & PRESERVE♦ Full day of scenic cruising and glacier watching	✓	✓	✓	✓	✓	✓
MCKINLEY EXPLORER® Luxury domed railcars between Anchorage and Denali	✓	✓	✓	✓	✓	✓
TUNDRA WILDERNESS TOUR (S) 6-hour wildlife-spotting adventure deep into Denali■	✓	✓	✓	✓	✓	✓
JOURNEY HOST Expert narration and travel coordination on land						
KLONDIKE SPIRIT IN DAWSON CITY Narrated Yukon River cruise on a paddlewheeler						
RIVERBOAT <i>DISCOVERY</i> (L) IN FAIRBANKS Cruise the Alaska interior on an authentic sternwheeler	✓		✓	✓	✓	
GOLD DREDGE 8 IN FAIRBANKS Pan for gold at an actual mining camp	P		✓	✓	P	
WHITE PASS & YUKON ROUTE RAILROAD Spectacular mountain ride on a narrow-gauge train						
DIRECT TO DENALI Go to Denali right from your ship via rail or motorcoach; no overnight in Anchorage		✕				🚗
PORTAGE GLACIER View Ice Age-era icebergs from just 300 yards away	U	P	✓	✓	U	P
MCKINLEY CHALET RESORT DENALI SUITES Enjoy a spacious balcony, larger living area and enhanced amenities	U	U	U	U	U	U
TASTE OF THE YUKON (L) Enjoy a hearty Yukon lunch and meet sled dogs						

L = Lunch included; S = Snack included, full lunch upgrade available; U = Upgrade; P = Pre/post additional excursion; CF = Cruise First Cruisetours only; LF = Land First Cruisetours only; 🚗 = Direct to Denali via motorcoach; ✕ = Direct to Denali via rail  
 ■ Visits to the Park in May and September are dependent on conditions. If necessary, the Tundra Wilderness Tour may be replaced by a 4- to 5-hour fully narrated tour.  
 ♦ Y3-Y6 Cruise First Cruisetours do not cruise Glacier Bay but offer an OPTIONAL excursion to Tracy Arm and the twin Sawyer Glaciers. S1 May 24 departure and all S2 departures include scenic cruising of Hubbard Glacier in lieu of Glacier Bay National Park & Preserve.

D7	D8	D9	D0	S1/S2	Y1	Y2	Y3	Y4	Y5	Y6
✓	✓	✓	✓		✓	✓				
							✓	✓	✓	✓
				✓						
✓	✓	✓	✓	✓	✓	✓	✓	✓	✓	✓
✓	✓	✓	✓	✓	✓	✓	✓	✓	✓	✓
			✓	✓	✓	✓	✓	✓	✓	✓
					✓	✓	✓	✓	✓	✓
					U	U	✓	✓	U	U
P	P		P	✓	✓	CF				
P	P		P	✓	✓	LF	✓	✓	✓	
							✓	✓	✓	✓
	✕	✕	✕							
U		P								
U	U	U	U	U	U	U	U	U	U	U
					✓		U	U	U	

## GREAT LAND DINING PLANS

For your journey on land, choose an optional breakfast, lunch and dinner meal plan—or a breakfast-only plan.

FULL DINING PLANS	D1	D2	D3	D4	D5	D6
LAND FIRST	5B, 2L, 4D	4B, 2L, 3D	7B, 2L, 4D	7B, 2L, 4D	4B, 2L, 3D	3B, 2L, 2D
CRUISE FIRST	4B, 2L, 5D	3B, 2L, 4D	6B, 2L, 5D	6B, 2L, 5D	3B, 2L, 4D	2B, 2L, 3D

B = Breakfast, L = Lunch, D = Dinner

D7	D8	D9	D0	Y1	Y2	Y3	Y4	Y5	Y6
3B, 1L, 2D	2B, 1L, 1D	3B, 1L, 2D	3B, 2L, 2D	10B, 2L, 10D	6B, 2L, 6D	10B, 2L, 9D	8B, 2L, 7D	7B, 2L, 6D	6B, 2L, 5D
2B, 1L, 3D	1B, 1L, 2D	2B, 1L, 3D	2B, 2L, 3D	10B, 2L, 10D	6B, 2L, 6D	9B, 2L, 10D	7B, 2L, 8D	6B, 2L, 7D	5B, 2L, 6D

# TERMS & CONDITIONS

## RESERVATIONS

Accommodations are limited. If you use a travel agent/travel agency ("TA") to book your reservation, you shall pay deposits and payments for Holland America Line's ("HAL") services to such TA. HAL will only issue travel documents if and when it has received full payment from TA. HAL will only make any refunds to the applicable TA based on the amount HAL actually received, less any applicable cancellation fees and charges; guest is responsible for obtaining any refund monies from TA.

## DEPOSIT AND FINAL PAYMENT REQUIREMENTS

Deposit is required at the time of cruise booking and final payment of balance must be received no later than 90 days prior to departure for 2022 and 2023 Alaska cruises and cruisetours.

## CANCELLATIONS

Our cancellation policy allows you to cancel your 2022 or 2023 Alaska Cruise or Cruisetour up to 91 days prior to departure and receive a full refund. If you cancel your 2022 Alaska Cruise or Cruisetour within 90 days, you are required to pay a cancellation fee (including 3rd and 4th berths) as set forth below. Such fees are based on the fare paid, excluding Taxes, Fees & Port Expenses ("TFPE"), transfers, surcharges, shore & land excursions and most pre-purchased gift(s) and/or special service(s). See more details in the Cruise Contract on hollandamerica.com. For 2022 and 2023 Alaska Cruises and Cruisetours the amount of the cancellation fee varies based on the timing of cancellation as follows:

2022 AND 2023 ALASKA CRUISES & CRUISETOURS	
Number of Days Before Commencing Travel that Guest Cancels Cruise	Amount of Cancellation Fee
90-76	amount equal to deposit requirement
75-61	50% of gross fare
60-31	75% of gross fare
30 or less	100% of gross fare

Change to arrangements may be subject to change charges.

## CREW APPRECIATION AND SERVICE CHARGES

For your convenience, a **Crew Appreciation** will be automatically added to your onboard account to recognize the efforts of a wide variety of crew members in various departments, including those in the Dining, Entertainment, Guest Services, and Galley areas. The amount of the Crew Appreciation is based on your stateroom category and is subject to adjustment at your discretion, except as otherwise provided in the Crew Appreciation and Service Charge Policy. A **Service Charge** will be automatically added to optional purchases of beverage packages, drinks, dining room and specialty dining, onboard parties, and other services or amenities provided to guests that are not included in the Cruise Fare. The Crew Appreciation and Service Charge payments on all vessels in our fleet are pooled and distributed in the form of compensation, including bonuses. For further details, please review our Crew Appreciation and Service Charge Policy on hollandamerica.com.

## TAXES, FEES & PORT EXPENSES

"Taxes, Fees & Port Expenses" or "TFPE" as used by HAL, may include any and all fees, charges, tolls, and taxes imposed on HAL by governmental or quasi-governmental authorities, as well as third-party fees and charges arising from a vessel's presence in a harbor or port. TFPE may be assessed per guest, per berth, per ton, or per vessel. TFPE are subject to change, and HAL reserves the right to collect any increases in effect at the time of sailing even if the fare has already been paid in full.

## GUESTS WITH DISABILITIES

Holland America Line seeks to accommodate the needs of guests with disabilities, to the extent feasible. Some accommodations require advanced notification. For more information, visit the Accessible Cruising section of our website.

## MEDICAL SERVICES

Each of our ships is equipped with limited medical facilities that are staffed by a physician and registered nurses. Unless otherwise indicated in an active HAL policy (for example, the COVID-19 Protection Program), guest will be charged a fee for all medical services and medications obtained on board. If the onboard physician is unable to care for your needs on board, you will be transferred to medical facilities on shore. If your condition will require that you have special medical apparatus or assistance on board, we must be made aware of that at time of booking in order to determine whether we can accommodate your needs.

## PASSPORTS/VISAS/IMMUNIZATIONS

You are solely responsible for securing and having available all proper documentation for the countries visited on your cruise or land tour and for bringing all necessary travel documents such as passports, visas, proof of citizenship, re-entry permits, minor's permissions, and medical certificates showing all necessary vaccinations. Guests should check with their TA or the appropriate government authority to determine the necessary documents. Guest will be refused boarding or disembarked without recourse or liability for refund, payment, compensation, or credit of any kind if they do not have proper documentation, and they will be subject to any fine or other costs incurred by HAL that result from improper documentation or noncompliance with applicable regulations.

## RESPONSIBILITY

All HAL vessels are owned by HAL Antillen N.V. and operated by Holland America Line N.V. in its capacity as general partner of Cruiseport Curaçao C.V. Transportation aboard the ship is provided solely by the Shipowner and Operator and pursuant to the Cruise Contract that you will receive prior to embarkation. Ships' Registry: The Netherlands.

Non-Holland America Line services (for example shore excursions) are generally performed by independent contractors. These non-Holland America Line services are solely at your risk and subject to the terms or arrangements with the independent contractor. HAL assumes no responsibility with respect to these non-Holland America Line services (including cancellation, injury, or death) even though HAL may collect monies or make bookings.

## ACCURACY OF CONTENTS / GENERAL

Contents of this brochure, including all terms and conditions, are subject to change at any time at the sole discretion of HAL. Please refer to hollandamerica.com for up-to-date information. **Any advertised offer may be changed or revoked at any time.**

Situations may arise which, in our opinion, make it necessary for us to cancel, advance or postpone a scheduled departure, change itineraries or make substitutions involving hotels, restaurants, ports of call, other travel components, vessels or other modes of transportation. In that event, we do not assume responsibility or liability for any resulting losses, expenses or inconvenience. We are not required to make refunds once travel commences, regardless of the reason for guests being unable to complete their travel.

The ship names and all other trademarks, slogans, logos and imagery used herein are, whether or not registered, owned by Holland America Line N.V.

**All guests will be required to agree to the Cruise Contract and all information and terms therein.**



Ketchikan, Alaska



Alaska

**\*Have It All Terms & Conditions:** Have It All fares are based on Promo(s) N1/U1. Featured fares are per person based on double occupancy, cruise or cruisetours only. Taxes, Fees & Port Expenses are additional. Have It All amenities are subject to availability, available for new bookings only, available for 1st/2nd guests only, apply only to the cruise portion of cruisetours, are not combinable with any other discounts and are not transferable or refundable. Have It All fares are applicable on select 2022 and 2023 departures. **Signature Beverage Package** has a daily limit of 15 beverages, which includes all beverages priced at us\$11.00 or lower and includes gratuities. Beverage package includes non-alcoholic beverages such as sodas and specialty coffees. Guests must order beverages one at a time and must be 21 years or older for alcoholic beverages. Sharing is not permitted. Beverage management reserves the right to revoke the package if misused and refuse service for any reason, including service of alcoholic beverages to intoxicated guests. Package excludes purchases made in Signature Shops, Mini Bar and In-Room Dining, or beverages on Half Moon Cay. **Specialty dining** is based on cruise duration and ship type. For 6-9-day voyages, guests will receive one night at Pinnacle Grill or Tamarind. For ships without Tamarind, guests will receive one night at Pinnacle Grill or Canaletto. For 10-20-day voyages, guests will receive two nights: one night at Pinnacle Grill and one night at Tamarind. For ships without Tamarind, guests will receive two nights: one night at Pinnacle Grill and one night at Canaletto. For 21+ day voyages (excluding Grands), guests will receive three nights: one night at Pinnacle Grill, one night at Tamarind and one night at Canaletto. For ships without Tamarind, guests will receive three nights: two nights at Pinnacle Grill, one night at Canaletto. Offer excludes Specialty Dining Events in the Pinnacle Grill such as Sel de Mer, De Librije and Sommelier Dinner. Reservations and dining times will be available to pre-reserve. **Shore excursion** offer is based on cruise duration. For Alaska cruisetours and 6-9-day voyages, guests can choose one shore excursion (up to \$100 value) or apply \$100 off any one tour. For 10-20-day voyages, guests can choose two shore excursions (up to \$100 value per tour) or apply \$100 off each of any two tours. For 21+ day voyages (excluding Grands), guests can choose three shore excursions (up to \$100 value per tour) or apply \$100 off each of any three tours. Tour value in US dollars. If excursion chosen has a value of less than \$100, you will receive any residual credit for purchasing additional tours aboard your cruise. Your shore excursion offer will be available to book pre-cruise or on board. If you or Holland America Line cancel a pre-cruise tour reservation (more than 3 days prior to the cruise departure), we will automatically re-issue your promotional Shore Excursion credit to be used toward another tour selection. If a shore excursion (with the promotional credit applied) is cancelled on board before the published deadline, you will be refunded any amount paid, and your promotional credit will be issued back in the form of a non-refundable onboard credit, to be used toward another tour. Shore excursion credit under this promotion is non-transferable to other guests or bookings. For guests on an Alaska cruisetour, discounts can be applied to optional excursions booked pre-cruise but not on board. **Wi-Fi Surf Package:** Surf your favorite sites including emails, sports, and news and general browsing. All onboard Internet usage is subject to Holland America Line standard policies, which may limit browsing of some sites due to network security and bandwidth usage. Applications that use high bandwidth may be blocked and offerings are subject to change with or without notice. The plan can be activated on any device but only one device can be actively connected at a time. Upgrades are available once on board for a single day or the remaining duration of the voyage or for adding more devices. Offer applies to guests 1 & 2 only in a stateroom. Ships' Registry: The Netherlands.



## DOWNLOAD THE NAVIGATOR® APP

The Holland America Line Navigator App is your indispensable tool for cruise planning, essential updates, embarkation, managing your onboard experience and booking shore excursions.

HOLLAND AMERICA LINE  
**NAVIGATOR**

## CRUISE WITH THE BEST

HOLLAND AMERICA LINE IS PROUD TO CONSISTENTLY WIN THE CRUISE INDUSTRY'S TOP HONORS.



# Have it all.

Our best amenities included in your fare\*

- > **SHORE EXCURSIONS\***
- > **DRINK PACKAGE\***
- > **SPECIALTY DINING\***
- > **WI-FI\***

\*Terms apply; see page 43 for details.

